



**DIRECTORATE OF HEALTH SERVICES
KASHMIR**



IV UFH (UNFRACTIONATED HEPARIN)

LMWH: PREFER ENOXAPARIN 0.4 ML IV STAT IN STEMI

IF NOT AVAILABLE

HEPARIN

5ML HAS 25000U
1ML HAS 5000U

DILUTE

1ML WITH 4ML NS
SO 1ML HAS 1000
UNITS

**UFH IV LOADING
DOSE**

**50-60 U/KG BOLUS
FOR 50KG PATIENT
= 2.5ML IV STAT**

**NEVER GO
BEYOND 4ML**

**MAX 4000 U
BOLUS**

**CONTINUATION
IV INFUSION**

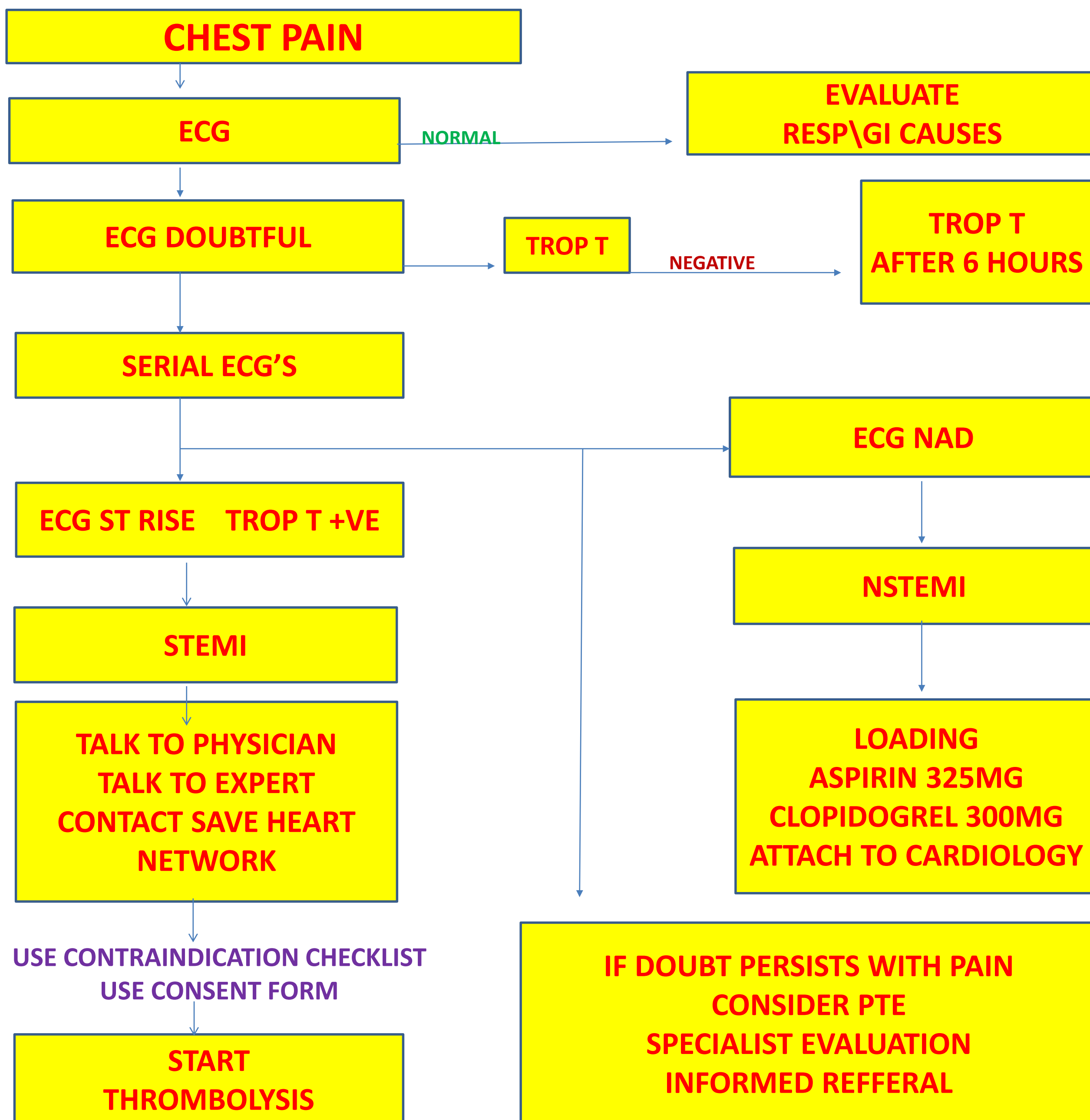
**12U/KG/HR = 1000
1U/HOUR**

INFUSION

1ML/HOUR



ACS ALGORITHM



NOTE: PREFER ENOXAPARIN 0.4 ML IV STAT IN STEMI